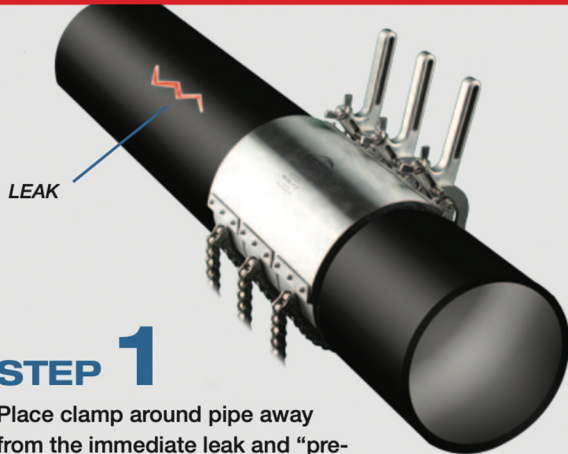


INSTALLATION INSTRUCTIONS

RAPID RESPONSE™ PIPE REPAIR SYSTEM

**BEFORE COMMENCING PLEASE READ
THE REVERSE SIDE OF THIS SHEET
(SAFETY INSTRUCTIONS)**



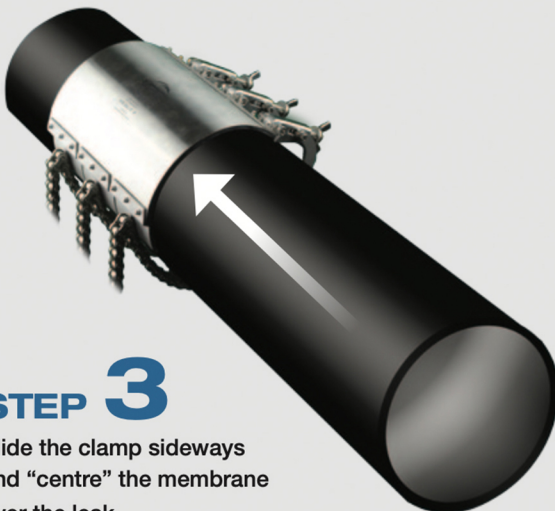
STEP 1

Place clamp around pipe away from the immediate leak and "pre-tension" the chain and locking handle to suit the pipe diameter.



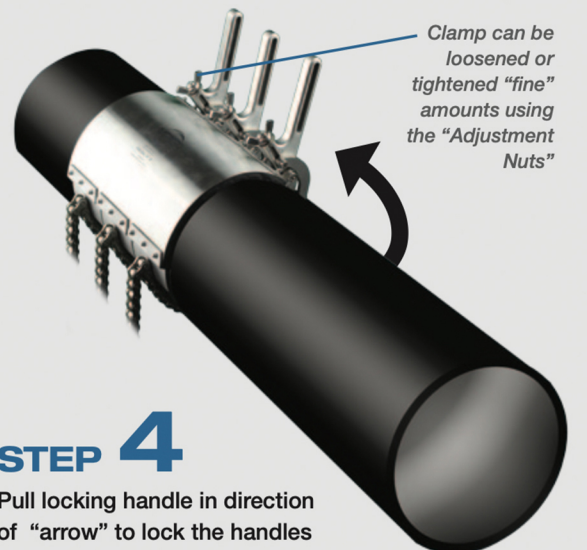
STEP 2

Release the handle tension.



STEP 3

Slide the clamp sideways and "centre" the membrane over the leak.



STEP 4

Pull locking handle in direction of "arrow" to lock the handles in place. Refer to our website for a video demonstration.

2A Fisher Street Port Adelaide,
South Australia, 5015
Phone: +61 451 198 298
www.rapidresponseclamp.com

VPG INNOVATION

SAFETY INSTRUCTIONS

RAPID RESPONSE™ PIPE REPAIR SYSTEM

WARNING: This product does not retain axial pipe movement.
This product does not repair a full circumferential pipe leak.

IMPORTANT SAFETY POINTS

- 1** Wear safety glasses during installation.
- 2** Using Adjusting Nut, don't over-tighten the tension chain when adjusting clamp to suit pipe diameter.
- 3** Don't use pipe or extension bar (excessive force) on the handle to lock clamp.
- 4** Make sure tension chain doesn't get twisted during installation
- 5** Keep hand and fingers clear of pinch points on clamp while locking the handle.
- 6** Ensure the "TENSION CHAIN" is on the "CHAIN HOOK" correctly before locking handle.
- 7** Use caution when installing clamp to avoid any damage to the membrane seal.
- 8** If using copper sheet and clamps combined, use protective gloves to avoid injury.

